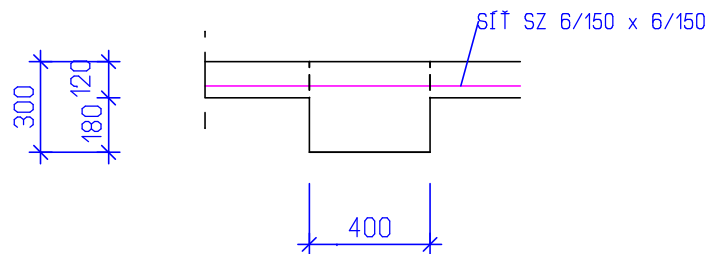




VED. PROJEKTU	ARCH. NÁVRH	VYPRACOVAL	KONTROLOVAL	Projekční kancelář Žižkov s. r. o.	
ING. V. ENT		ING. T. DOLEČEK		Žižkov 504, 562 01, Ústí nad Orlicí, IČO: 27544524	
				tel./fax: 465 524 626, projekce@zizkovuo.cz	
INVESTOR	Město Česká Třebová			FORMÁT	21 A4
MÍSTO STAVBY	Česká Třebová			DATUM	09/2019
ŠATNY A TRIBUNA ATLETICKÉHO STADIONU NA SKALCE, ČESKÁ TŘEBOVÁ				ÚČEL	PROVÁDĚNÍ STAVBY
				MĚŘÍTKO	1 : 25
				Č. ZAKÁZKY	2014_30
				Č. ARCHIVNÍ	–
VÝKRES VÝZTUŽE ZÁKLADOVÝCH TRÁMŮ A PATEK				ČÍSLO KOPIE	ČÍSLO VÝKRESU D02.2.02.3

ZP 71.66 bm

ŘEZ 1:25



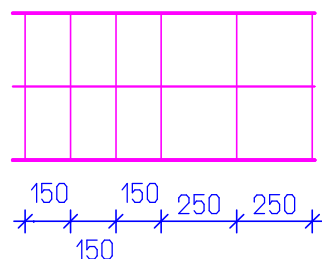
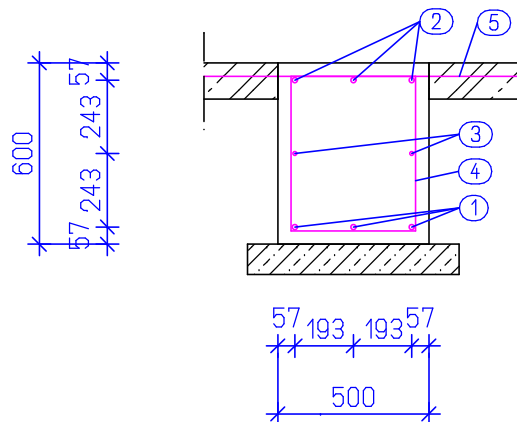
BETON C25/30 XC4, XF1 Dmax22 S4

PODKL. BETON C16/20 X0

OCEL SÍŤ SZ

ZT1 91.39 bm

ŘEZ 1:25



②  $\varnothing R 18 - 6000\text{mm} / 3 \text{ Ks}$

③  $\varnothing R 12 - 6000\text{mm} / 2 \text{ Ks}$

①  $\varnothing R 18 - 6000\text{mm} / 3 \text{ Ks}$

⑤  $\varnothing R 8 - 1000\text{mm} / 33 \text{ Ks}$

④  $\varnothing R 8 - 1680\text{mm} / 25 \text{ Ks}$

VZDÁLENOST TRÁMKŮ:  
NAD PILOTOU: 150 MM (DO VZD. 1 M)  
V POLI: 250 MM  
KRYTÍ TRÁMKŮ 40 MM

BETON C25/30 XC4, XF1 Dmax22 S4

PODKL. BETON C16/20 X0

OCCEL B500B

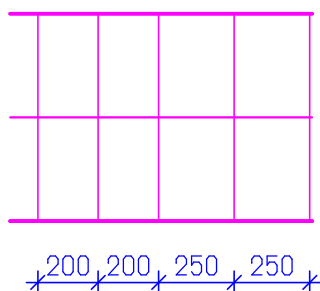
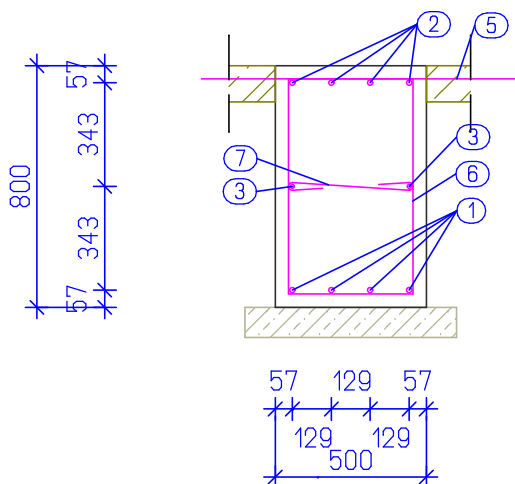
## VÝPIS VÝZTUŽE ZT1

19 Ks

ČÍSLO	PROFIL	DÉLKA	KUSŮ	DÉLKA	HMOTNOST
4	R 8	1.68m	475	798.00m	314.88kg
5	R 8	1.00m	627	627.00m	247.40kg
R 8 CELKEM				1425.00m	562.28kg
3	R 12	6.00m	38	228.00m	202.42kg
R 12 CELKEM				228.00m	202.42kg
1	R 18	6.00m	57	342.00m	683.17kg
2	R 18	6.00m	57	342.00m	683.17kg
R 18 CELKEM				684.00m	1366.34kg
CELKEM					2131.04kg

ZT2 79.89 bm

ŘEZ 1:25



②  $\emptyset$  R 18 - 6000mm / 4 Ks

③  $\emptyset$  R 12 - 6000mm / 2 Ks

①  $\emptyset$  R 18 - 6000mm / 4 Ks

⑤  $\emptyset$  R 8 - 1000mm / 33 Ks

⑥  $\emptyset$  R 8 - 2080mm / 23 Ks

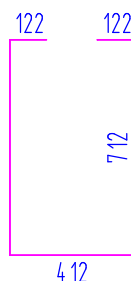
VZDÁLENOST TŘMÍNKŮ:  
NAD PILOTOU: 200 MM (DO VZD. 1 M)  
V POLI: 250 MM  
KRYTÍ TŘMÍNKŮ 40 MM

BETON C25/30 XC4, XF1 Dmax22 S4

PODKL. BETON C16/20 X0

OCEL B500B

⑦  $\emptyset$  R 8 - 665mm / 23 Ks



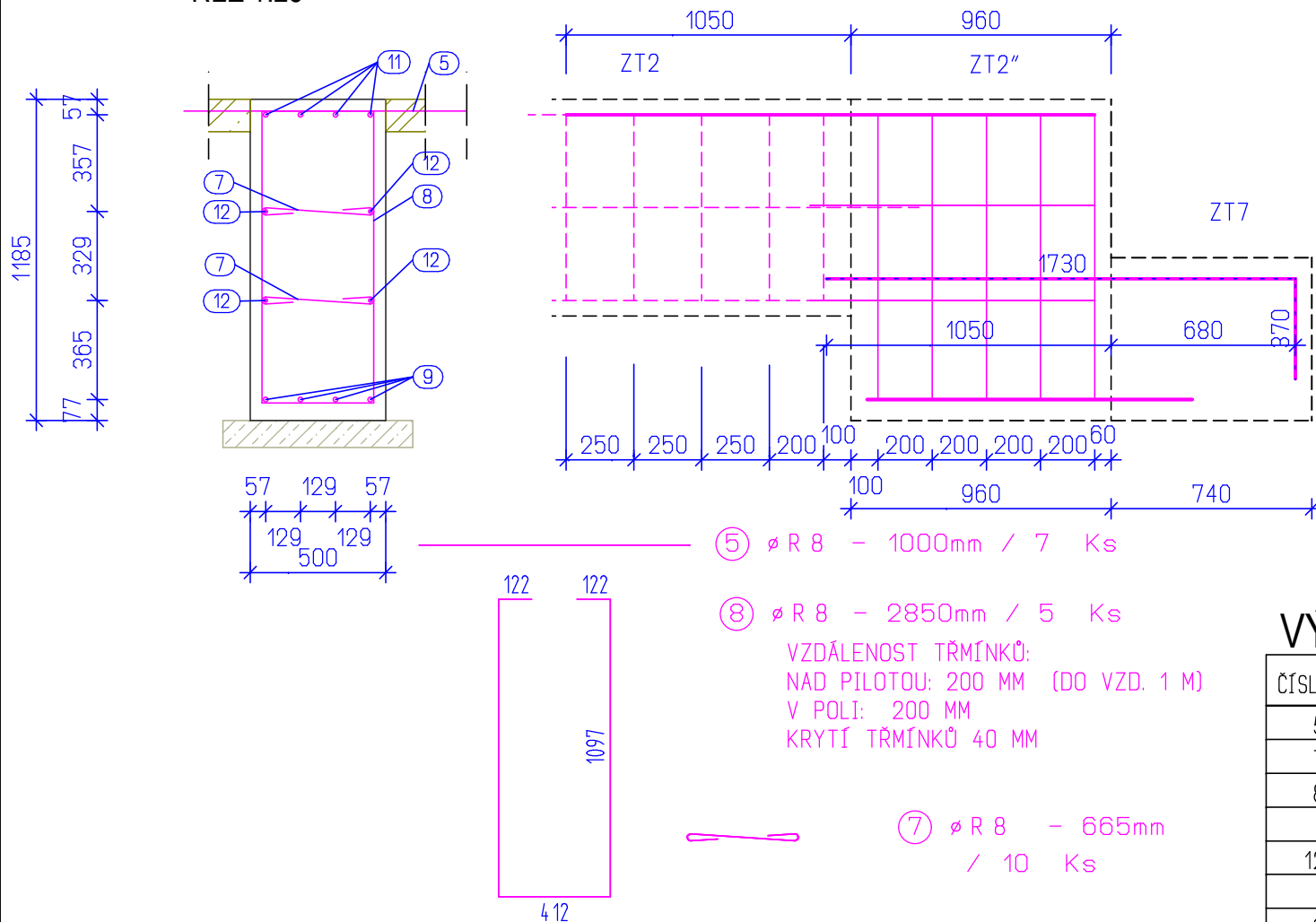
## VÝPIS VÝZTUŽE ZT2

17 Ks

ČÍSLO	PROFIL	DĚLKA	KUSŮ	DĚLKA	HMOTNOST
5	R 8	1.00m	561	561.00m	221.36kg
6	R 8	2.08m	391	813.28m	320.91kg
7	R 8	0.66m	391	258.06m	101.83kg
R 8 CELKEM				1632.34m	644.10kg
3	R 12	6.00m	34	204.00m	181.11kg
R 12 CELKEM				204.00m	181.11kg
1	R 18	6.00m	68	408.00m	815.01kg
2	R 18	6.00m	68	408.00m	815.01kg
R 18 CELKEM				816.00m	1630.02kg
CELKEM					2455.23kg

ZT2" 5.60

ŘEZ 1:25



⑪  $\varnothing R 18 - 1950\text{mm} / 4 \text{ Ks}$

⑫  $\varnothing R 12 - 1050\text{mm} / 2 \text{ Ks}$

⑩  $\varnothing R 18 - 2100\text{mm} / 3 \text{ Ks}$

⑫  $\varnothing R 12 - 1050\text{mm} / 2 \text{ Ks}$

⑨  $\varnothing R 18 - 1200\text{mm} / 4 \text{ Ks}$

BETON C25/30 XC4, XF1 Dmax22 S4

PODKL. BETON C16/20 X0

OCEL B500B

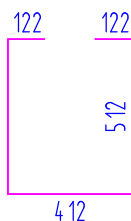
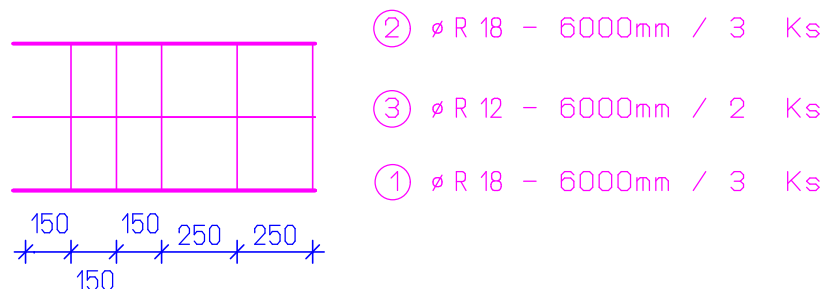
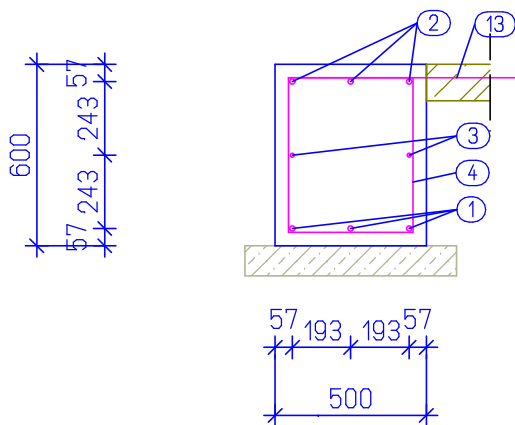
## VÝPIS VÝZTUŽE ZT2"

4 Ks

ČÍSLO	PROFIL	DĚLKA	KUSŮ	DĚLKA	HMOTNOST
5	R 8	1.00m	28	28.00m	11.05kg
7	R 8	0.66m	40	26.40m	10.42kg
8	R 8	2.85m	20	57.00m	22.49kg
R 8 CELKEM				111.40m	43.96kg
12	R 12	1.05m	16	16.80m	14.92kg
R 12 CELKEM				16.80m	14.92kg
9	R 18	1.20m	16	19.20m	38.35kg
10	R 18	2.10m	12	25.20m	50.34kg
11	R 18	1.95m	16	31.20m	62.32kg
R 18 CELKEM				75.60m	151.01kg
CELKEM					209.89kg

ZT3 17.85 bm

ŘEZ 1:25



②  $\varnothing R 18 - 6000\text{mm} / 3 \text{ Ks}$

③  $\varnothing R 12 - 6000\text{mm} / 2 \text{ Ks}$

①  $\varnothing R 18 - 6000\text{mm} / 3 \text{ Ks}$

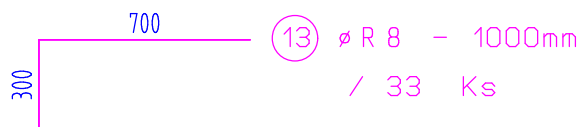
④  $\varnothing R 8 - 1680\text{mm} / 25 \text{ Ks}$

VZDÁLENOST TRMÍNKŮ:  
NAD PILOTOU: 150 MM (DO VZD. 1 M)  
V POLI: 250 MM  
KRYTÍ TRMÍNKŮ 40 MM

BETON C25/30 XC4, XF1 Dmax22 S4

PODKL. BETON C16/20 X0

OCEL B500B



⑬  $\varnothing R 8 - 1000\text{mm} / 33 \text{ Ks}$

## VÝPIS VÝZTUŽE ZT3

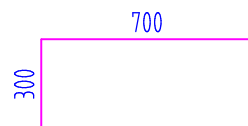
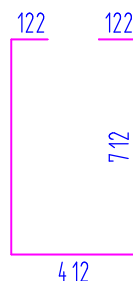
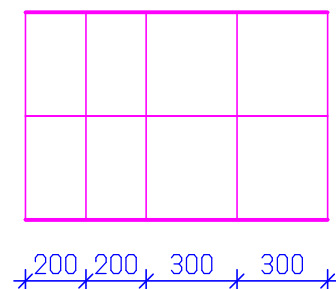
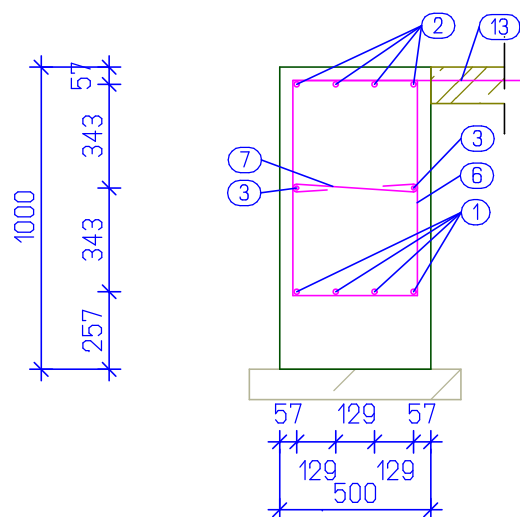
4 Ks

ČÍSLO	PROFIL	DÉLKA	KUSŮ	DÉLKA	HMOTNOST
4	R 8	1.68m	100	168.00m	66.29kg
13	R 8	1.00m	132	132.00m	52.09kg
R 8 CELKEM				300.00m	118.38kg
3	R 12	6.00m	8	48.00m	42.62kg
R 12 CELKEM				48.00m	42.62kg
1	R 18	6.00m	12	72.00m	143.83kg
2	R 18	6.00m	12	72.00m	143.83kg
R 18 CELKEM				144.00m	287.66kg
CELKEM					448.66kg

ZT4

24.30 bm

ŘEZ 1:25

②  $\varnothing R 18 - 6000\text{mm} / 4 \text{ Ks}$ ③  $\varnothing R 12 - 6000\text{mm} / 2 \text{ Ks}$ ①  $\varnothing R 18 - 6000\text{mm} / 4 \text{ Ks}$ ⑦  $\varnothing R 8 - 665\text{mm} / 23 \text{ Ks}$ ⑥  $\varnothing R 8 - 2080\text{mm} / 23 \text{ Ks}$ 

VZDÁLENOST TRMÍNKŮ:  
 NAD PILOTOU: 200 MM (DO VZD. 1 M)  
 V POLI: 250 MM  
 KRYTÍ TRMÍNKŮ 40 MM

⑬  $\varnothing R 8 - 1000\text{mm} / 33 \text{ Ks}$ 

BETON C25/30 XC4, XF1 Dmax22 S4

PODKL. BETON C16/20 X0

OCEL B500B

## VÝPIS VÝZTUŽE ZT4

5 Ks

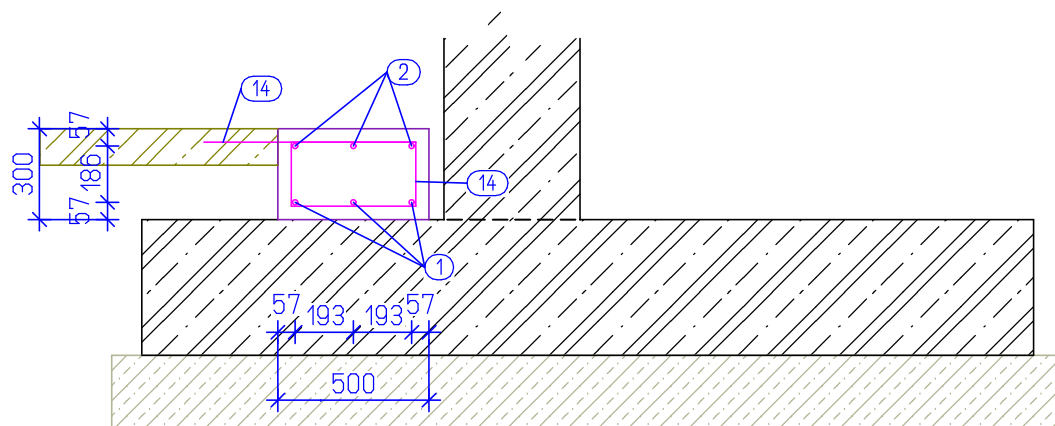
ČÍSLO	PROFIL	DĚLKA	KUSŮ	DĚLKA	HMOTNOST
6	R 8	2.08m	115	239.20m	94.38kg
7	R 8	0.66m	115	75.90m	29.95kg
13	R 8	1.00m	165	165.00m	65.11kg
R 8 CELKEM				480.10m	189.44kg
3	R 12	6.00m	10	60.00m	53.27kg
R 12 CELKEM				60.00m	53.27kg
1	R 18	6.00m	20	120.00m	239.71kg
2	R 18	6.00m	20	120.00m	239.71kg
R 18 CELKEM				240.00m	479.42kg
CELKEM					722.13kg

ZT5

ZT5

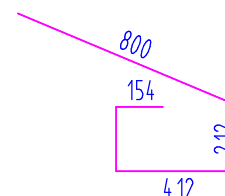
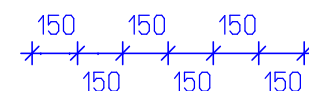
ŘEZ 1:25

20.42bm



②  $\varnothing$  R 18 - 6000mm / 3 Ks

①  $\varnothing$  R 18 - 6000mm / 3 Ks



⑭  $\varnothing$  R 8 - 1790mm / 34 Ks

VZDÁLENOST TRMÍNKŮ: 150 MM  
KRYTÍ TRMÍNKŮ 40 MM

BETON C25/30 XC4, XF1 Dmax22 S4

PODKL. BETON C16/20 X0

OCEL B500B

## VÝPIS VÝZTUŽE ZT5

4Ks

ČÍSLO	PROFIL	DÉLKA	KUSŮ	DÉLKA	HMOTNOST
14	R 8	1.79m	136	243.44m	96.06kg
R 8 CELKEM				243.44m	96.06kg
1	R 18	6.00m	12	72.00m	143.83kg
2	R 18	6.00m	12	72.00m	143.83kg
R 18 CELKEM				144.00m	287.66kg
CELKEM					383.72kg

VÝKRES VÝZTUŽE ZÁKLADOVÝCH TRÁMŮ ZT5

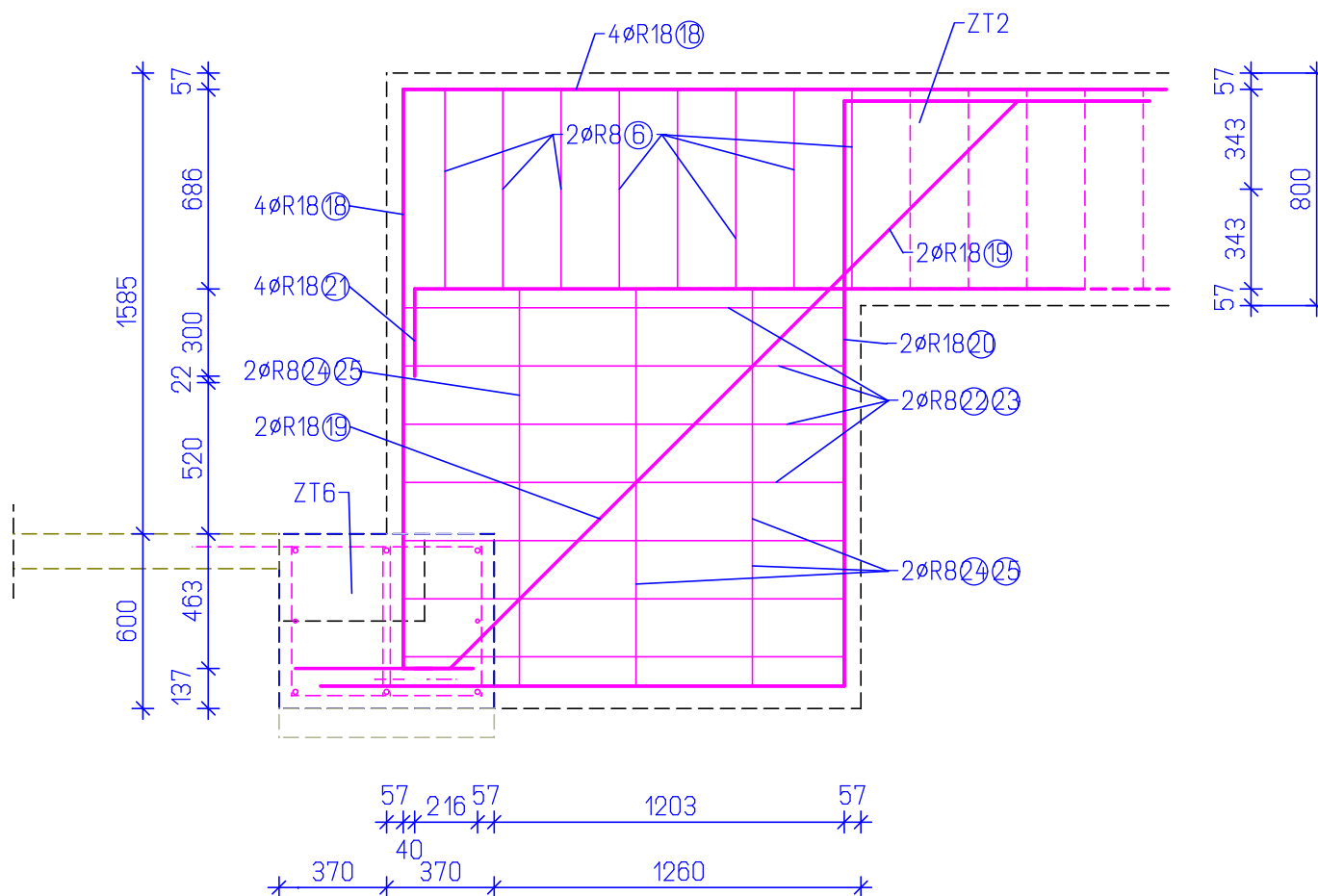
1:25

D02.2.02.3 / 07



ZT5"

ŘEZ 1:25



BETON C25/30 XC4, XF1 Dmax22 S4  
PODKL. BETON C16/20 X0  
OCEL B500B

## VÝPIS VÝZTUŽE ZT5"

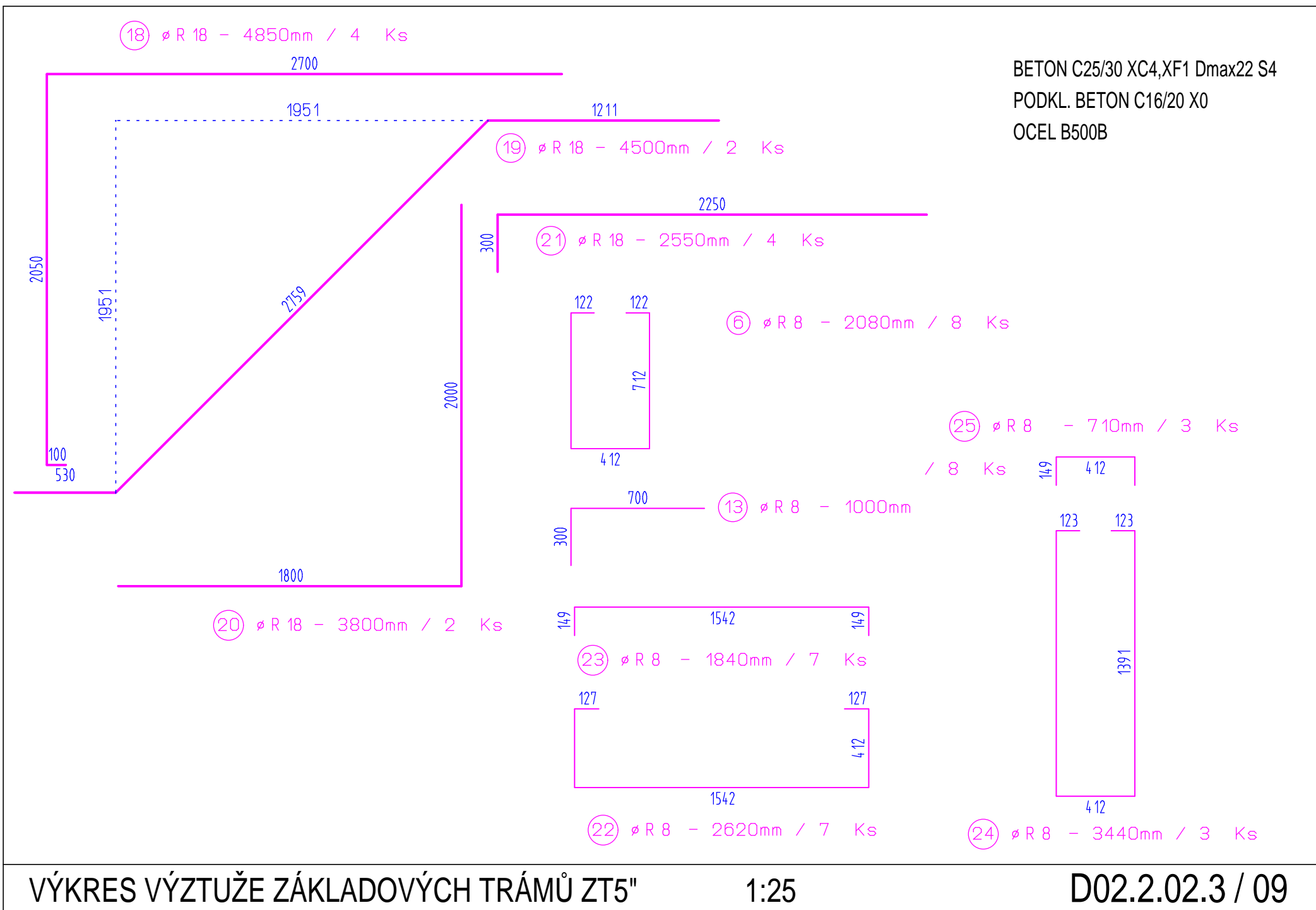
1 ks

ČÍSLO	PROFIL	DĚLKA	KUSŮ	DĚLKA	HMOTNOST
6	R 8	2.08m	8	16.64m	6.57kg
13	R 8	1.00m	8	8.00m	3.16kg
22	R 8	2.62m	7	18.34m	7.24kg
23	R 8	1.84m	7	12.88m	5.08kg
24	R 8	3.44m	3	10.32m	4.07kg
25	R 8	0.71m	3	2.13m	0.84kg
R 8 CELKEM				68.31m	26.96kg
18	R 18	4.85m	4	19.40m	38.75kg
19	R 18	4.50m	2	9.00m	17.98kg
20	R 18	3.80m	2	7.60m	15.18kg
21	R 18	2.55m	4	10.20m	20.38kg
R 18 CELKEM				46.20m	92.29kg
CELKEM					119.25kg

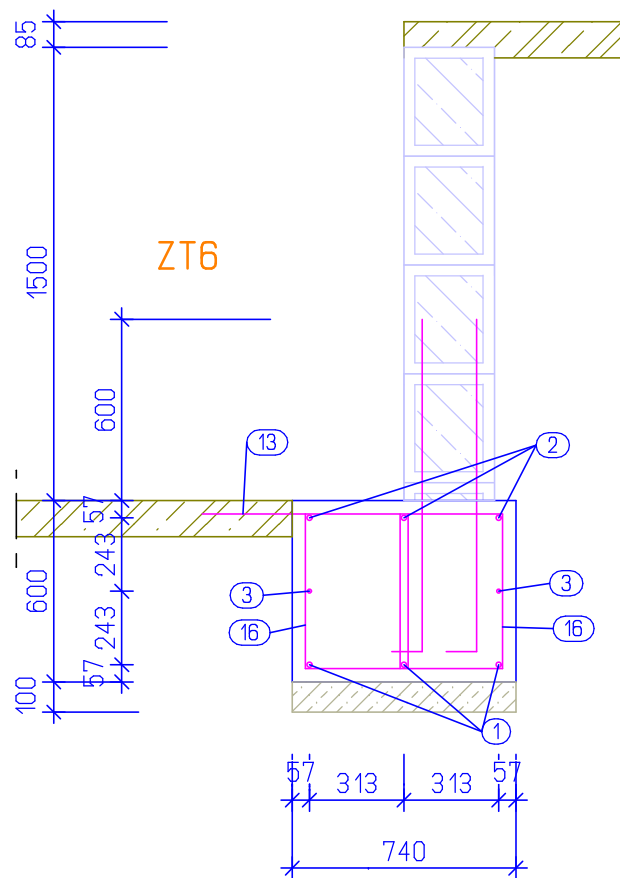
VÝKRES VÝZTUŽE ZÁKLADOVÝCH TRÁMŮ ZT5"

1:25

D02.2.02.3 / 08



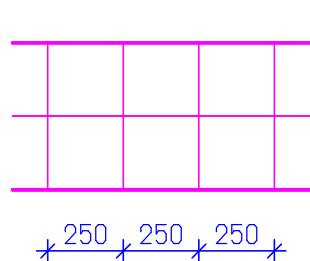
ZT6 3.59 bm  
ŘEZ 1:25



## VÝPIS VÝZTUŽE ZT6

1 Ks

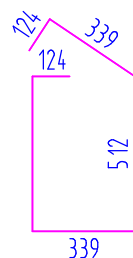
ČÍSLO	PROFIL	DÉLKA	KUSŮ	DÉLKA	HMOTNOST
13	R 8	1.00m	27	27.00m	10.65kg
15	R 8	1.95m	30	58.50m	23.08kg
R 8 CELKEM				85.50m	33.73kg
3	R 12	6.00m	2	12.00m	10.65kg
16	R 12	7.20m	36	259.20m	230.12kg
R 12 CELKEM				271.20m	240.77kg
1	R 18	6.00m	3	18.00m	35.96kg
2	R 18	6.00m	3	18.00m	35.96kg
R 18 CELKEM				36.00m	71.92kg
CELKEM					346.42kg



② ø R 18 - 6000mm / 3 Ks

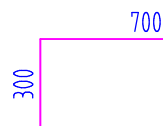
③ ø R 12 - 6000mm / 2 Ks

① ø R 18 - 6000mm / 3 Ks



①⑤ ø R 8 - 1950mm / 30 Ks

VZDÁLENOST TRMÍNKŮ:  
NAD PILOTOU: 250 MM (DO VZD. 1 M)  
V POLI: 250 MM  
KRYTÍ TRMÍNKŮ 40 MM

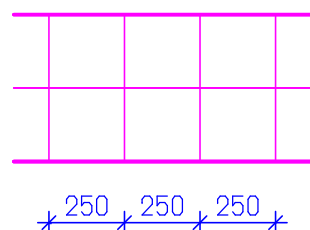
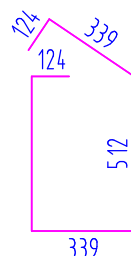
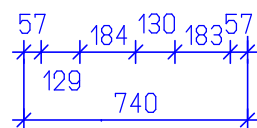
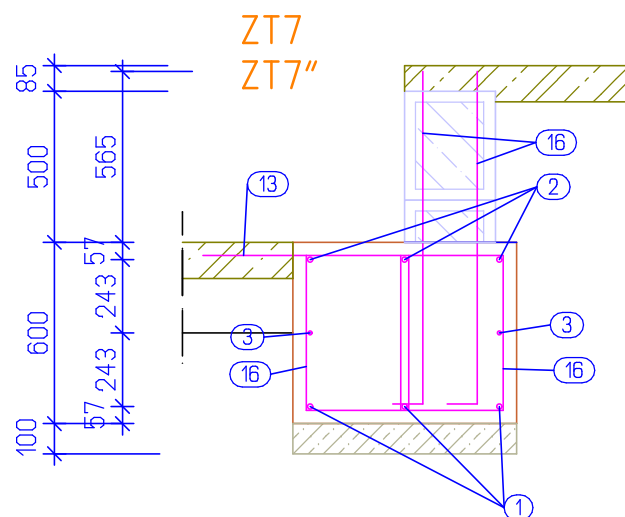


①③ ø R 8 - 1000mm / 27 Ks



BETON C25/30 XC4, XF1 Dmax22 S4  
PODKL. BETON C16/20 X0  
OCEL B500B

# ZT7 21.98 bm ŘEZ 1:25



- ②  $\varnothing$  R 18 - 6000mm / 3 Ks
- ③  $\varnothing$  R 12 - 6000mm / 2 Ks
- ①  $\varnothing$  R 18 - 6000mm / 3 Ks

- ①  $\varnothing$  R 18 - 6000mm / 3 Ks
- ③  $\varnothing$  R 12 - 6000mm / 2 Ks
- ②  $\varnothing$  R 18 - 6000mm / 3 Ks

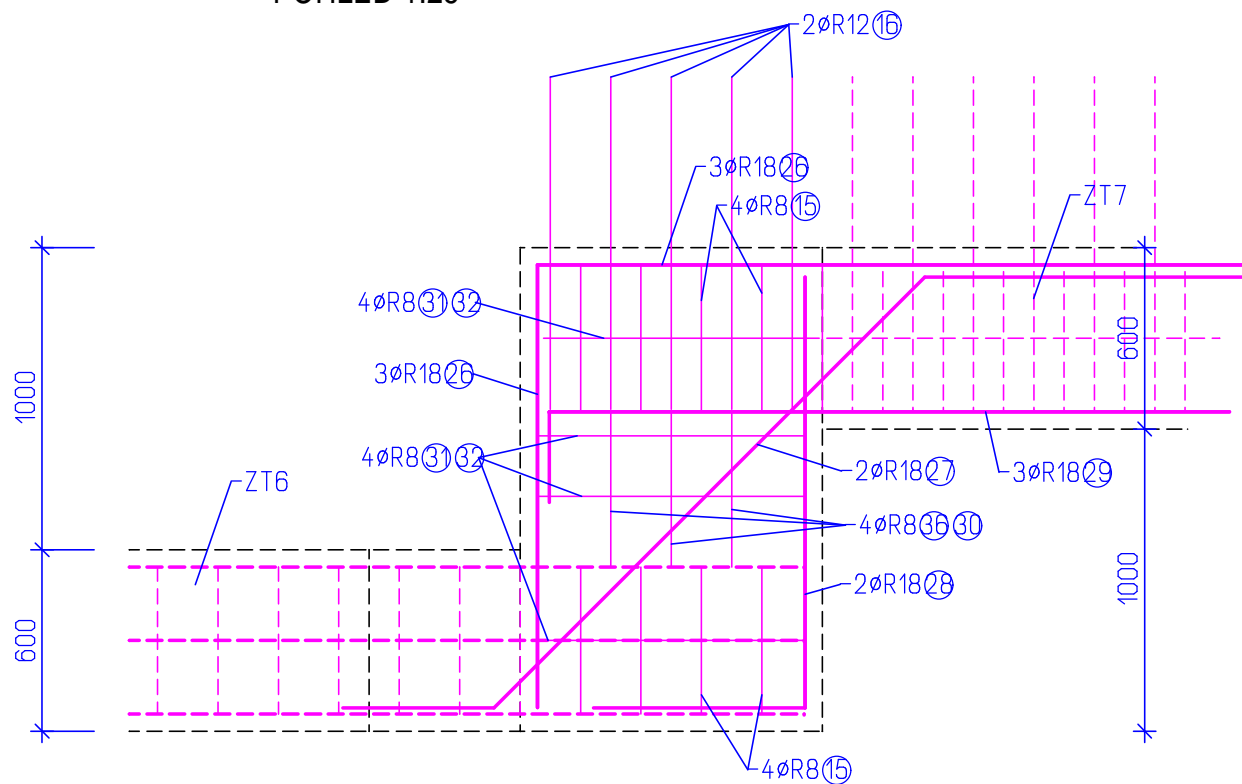
BETON C25/30 XC4, XF1 Dmax22 S4  
PODKL. BETON C16/20 X0  
OCEL B500B

## VÝPIS VÝZTUŽE ZT7

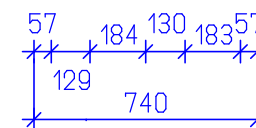
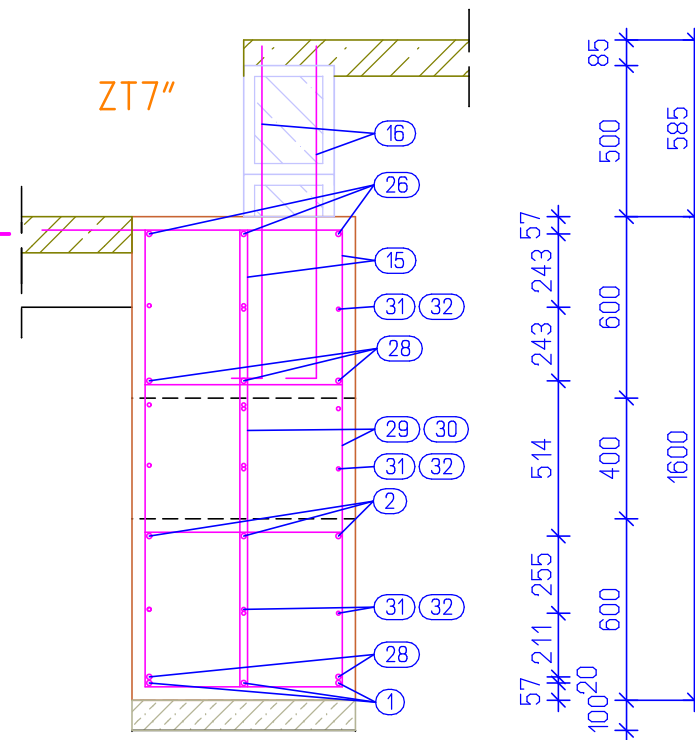
ČÍSLO	PROFIL	DĚLKA	KUSŮ	DĚLKA	HMOTNOST
13	R 8	1.00m	135	135.00m	53.27kg
15	R 8	1.95m	200	390.00m	153.89kg
R 8 CELKEM				525.00m	207.16kg
3	R 12	6.00m	10	60.00m	53.27kg
16	R 12	7.20m	50	360.00m	319.61kg
R 12 CELKEM				420.00m	372.88kg
1	R 18	6.00m	15	90.00m	179.78kg
2	R 18	6.00m	15	90.00m	179.78kg
R 18 CELKEM				180.00m	359.56kg
CELKEM					939.60kg

# ZT7"

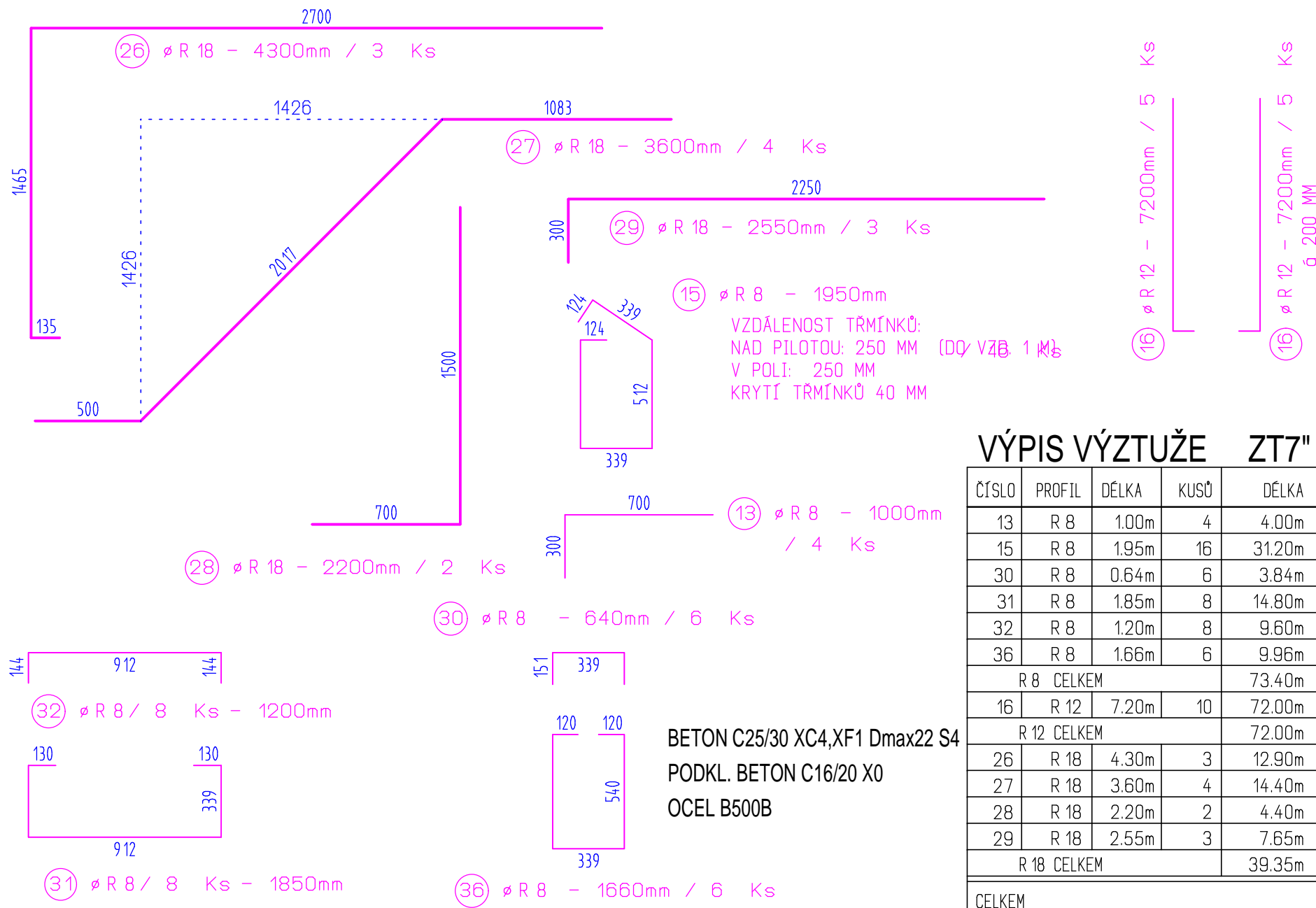
POHLED 1:25



# ŘEZ 1:25



BETON C25/30 XC4, XF1 Dmax22 S4  
 PODKL. BETON C16/20 X0  
 OCEL B500B



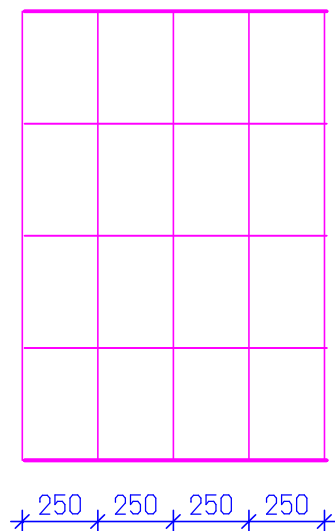
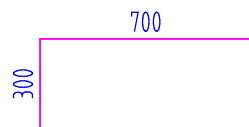
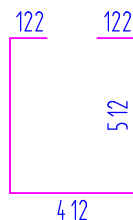
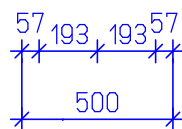
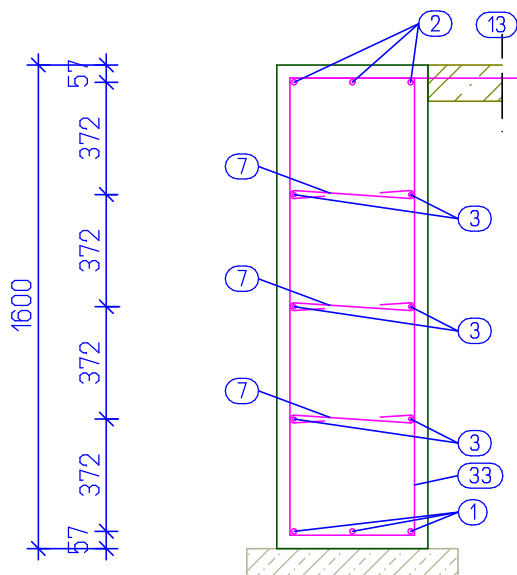
## VÝPIS VÝZTUŽE ZT7"

1 Ks

ČÍSLO	PROFIL	DÉLKA	KUSŮ	DÉLKA	HMOTNOST
13	R 8	1.00m	4	4.00m	1.58kg
15	R 8	1.95m	16	31.20m	12.31kg
30	R 8	0.64m	6	3.84m	1.52kg
31	R 8	1.85m	8	14.80m	5.84kg
32	R 8	1.20m	8	9.60m	3.79kg
36	R 8	1.66m	6	9.96m	3.93kg
R 8 CELKEM				73.40m	28.97kg
16	R 12	7.20m	10	72.00m	63.92kg
R 12 CELKEM				72.00m	63.92kg
26	R 18	4.30m	3	12.90m	25.77kg
27	R 18	3.60m	4	14.40m	28.77kg
28	R 18	2.20m	2	4.40m	8.79kg
29	R 18	2.55m	3	7.65m	15.28kg
R 18 CELKEM				39.35m	78.61kg
CELKEM					171.50kg

ZT8 7.91 bm  
ŘEZ 1:25

ZT8



②  $\varnothing$  R 18 - 6000mm / 3 Ks

③  $\varnothing$  R 12 - 6000mm / 2 Ks

③  $\varnothing$  R 12 - 6000mm / 2 Ks

③  $\varnothing$  R 12 - 6000mm / 2 Ks

①  $\varnothing$  R 18 - 6000mm / 3 Ks

③③  $\varnothing$  R 8 - 1680mm / 25 Ks

VZDÁLENOST TRMÍNKŮ 250 MM  
KRYTÍ TRMÍNKŮ 40 MM

⑬  $\varnothing$  R 8 - 1000mm / 33 Ks

BETON C25/30 XC4, XF1 Dmax22 S4  
PODKL. BETON C16/20 X0  
OCEL B500B

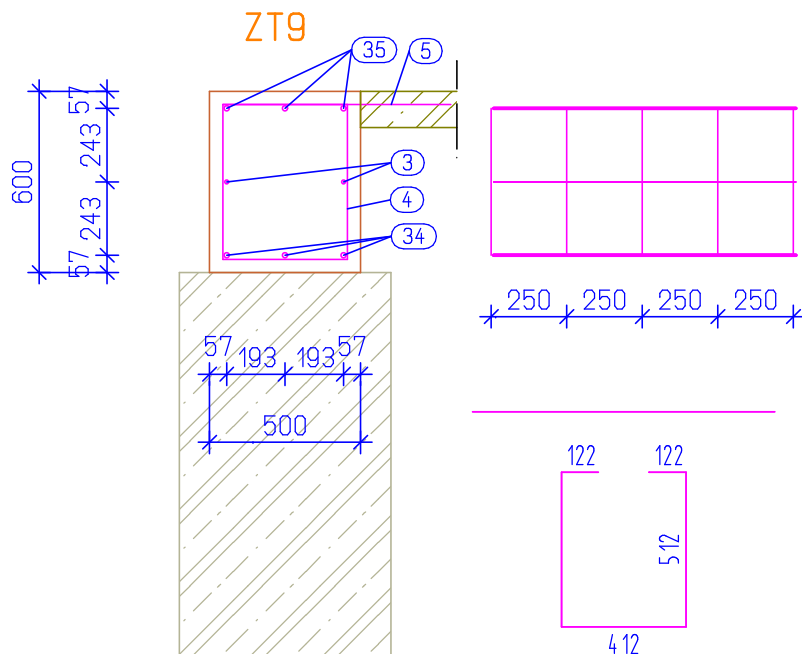
## VÝPIS VÝZTUŽE ZT8

2 Ks

ČÍSLO	PROFIL	DÉLKA	KUSŮ	DÉLKA	HMOTNOST
13	R 8	1.00m	66	66.00m	26.04kg
33	R 8	1.68m	50	84.00m	33.15kg
R 8 CELKEM				150.00m	59.19kg
3	R 12	6.00m	12	72.00m	63.92kg
R 12 CELKEM				72.00m	63.92kg
1	R 18	6.00m	6	36.00m	71.91kg
2	R 18	6.00m	6	36.00m	71.91kg
R 18 CELKEM				72.00m	143.82kg
CELKEM					266.93kg

ZT9 ZT9" 53.74 bm

ŘEZ 1:25

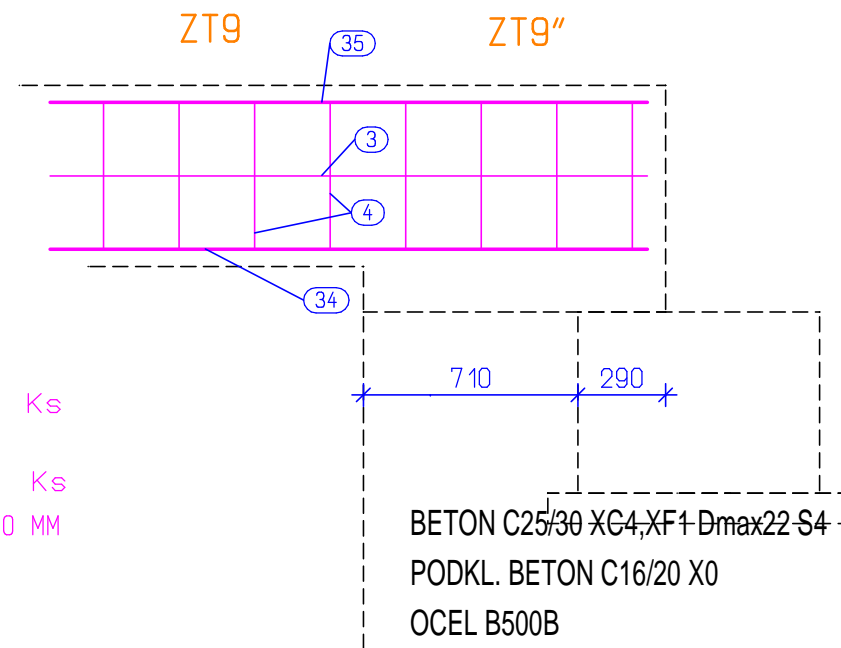


- ③⑤  $\emptyset$  R 14 - 6000mm / 3 Ks
- ③  $\emptyset$  R 12 - 6000mm / 2 Ks
- ③④  $\emptyset$  R 14 - 6000mm / 3 Ks

⑤  $\emptyset$  R 8 - 1000mm / 33 Ks

④  $\emptyset$  R 8 - 1680mm / 25 Ks

VZDÁLENOST TRMINKŮ 250 MM  
KRYTÍ TRMINKŮ 40 MM



BETON C25/30 XC4, XF1 Dmax22 S4  
PODKL. BETON C16/20 X0  
OCEL B500B

## VÝPIS VÝZTUŽE ZT9

10 Ks

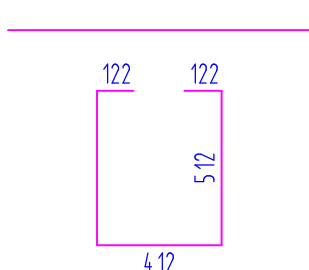
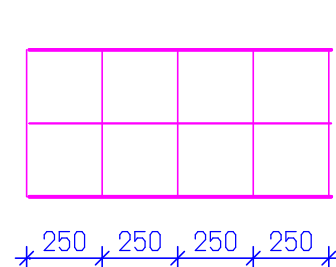
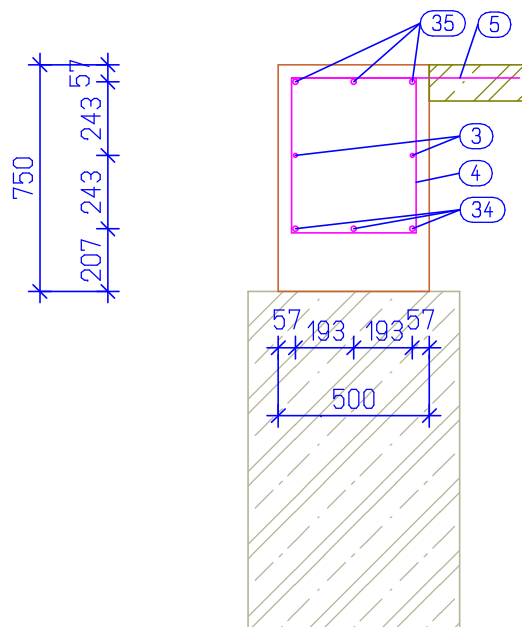
ČÍSLO	PROFIL	DÉLKA	KUSŮ	DÉLKA	HMOTNOST
4	R 8	1.68m	250	420.00m	165.73kg
5	R 8	1.00m	330	330.00m	130.21kg
R 8 CELKEM				750.00m	295.94kg
3	R 12	6.00m	20	120.00m	106.54kg
R 12 CELKEM				120.00m	106.54kg
34	R 14	6.00m	30	180.00m	217.51kg
35	R 14	6.00m	30	180.00m	217.51kg
R 14 CELKEM				360.00m	435.02kg
CELKEM					837.50kg



ZT10 9.49 bm

ŘEZ 1:25

ZT10



③⑤  $\varnothing$  R 14 - 6000mm / 3 Ks

③  $\varnothing$  R 12 - 6000mm / 2 Ks

③④  $\varnothing$  R 14 - 6000mm / 3 Ks

⑤  $\varnothing$  R 8 - 1000mm / 33 Ks

④  $\varnothing$  R 8 - 1680mm / 25 Ks

VZDÁLENOST TRMÍNKŮ 250 MM  
KRYTÍ TRMÍNKŮ 40 MM

BETON C25/30 XC4, XF1 Dmax22 S4

PODKL. BETON C16/20 X0

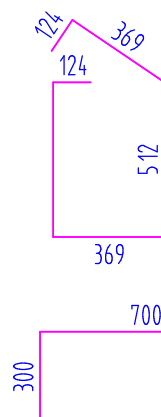
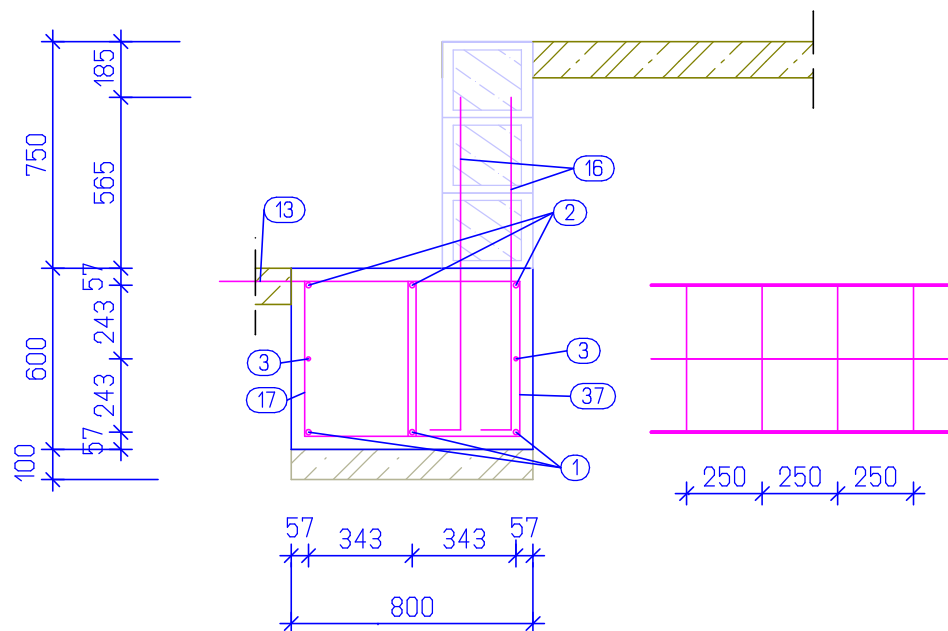
OCCEL B500B

## VÝPIS VÝZTUŽE ZT10 2 Ks

ČÍSLO	PROFIL	DÉLKA	KUSŮ	DÉLKA	HMOTNOST
4	R 8	1.68m	50	84.00m	33.15kg
5	R 8	1.00m	66	66.00m	26.04kg
R 8 CELKEM				150.00m	59.19kg
3	R 12	6.00m	4	24.00m	21.31kg
R 12 CELKEM				24.00m	21.31kg
34	R 14	6.00m	6	36.00m	43.50kg
35	R 14	6.00m	6	36.00m	43.50kg
R 14 CELKEM				72.00m	87.00kg
CELKEM					167.50kg

ZT11 11.80 bm

ŘEZ 1:25



③⑦  $\varnothing R 8 - 2010\text{mm} / 32 \text{ Ks}$   
VZDÁLENOST TRMÍNKŮ: 250 MM  
KRYTÍ TRMÍNKŮ 40 MM

⑬  $\varnothing R 8 - 1000\text{mm} / 27 \text{ Ks}$

②  $\varnothing R 18 - 6000\text{mm} / 3 \text{ Ks}$

③  $\varnothing R 12 - 6000\text{mm} / 2 \text{ Ks}$

①  $\varnothing R 18 - 6000\text{mm} / 3 \text{ Ks}$

⑬  $\varnothing R 12 - 7200\text{mm} / 5 \text{ Ks}$   
⑬  $\varnothing R 12 - 7200\text{mm} / 5 \text{ Ks}$   
@ 200 MM

BETON C25/30 XC4, XF1 Dmax22 S4

PODKL. BETON C16/20 X0

OCEL B500B

VÝPIS VÝZTUŽE ZT11

3 Ks

ČÍSLO	PROFIL	DĚLKA	KUSŮ	DĚLKA	HMOTNOST
13	R 8	1.00m	81	81.00m	31.96kg
37	R 8	2.01m	96	192.96m	76.14kg
R 8 CELKEM				273.96m	108.10kg
3	R 12	6.00m	6	36.00m	31.96kg
16	R 12	7.20m	30	216.00m	191.77kg
R 12 CELKEM				252.00m	223.73kg
1	R 18	6.00m	9	54.00m	107.87kg
2	R 18	6.00m	9	54.00m	107.87kg
R 18 CELKEM				108.00m	215.74kg
CELKEM					547.57kg

OZN.	ROZMĚR	DÉLKA [m]	KUSŮ	CELKEM[m]
ZP1	400 / 300 mm	2.34	1	2.34
ZP1	400 / 300 mm	2.37	1	2.37
ZP1	400 / 300 mm	2.59	7	18.13
ZP1	400 / 300 mm	3.17	1	3.17
ZP1	400 / 300 mm	3.44	1	3.44
ZP1	400 / 300 mm	3.57	1	3.57
ZP1	400 / 300 mm	3.59	1	3.59
ZP1	400 / 300 mm	4.17	1	4.17
ZP1	400 / 300 mm	4.95	1	4.95
ZP1	400 / 300 mm	5.41	3	16.23
ZP1	400 / 300 mm	9.70	1	9.70
CELKEM				71.66
ZT1	500 / 600 mm	1.58	1	1.58
ZT1	500 / 600 mm	2.52	1	2.52
ZT1	500 / 600 mm	4.57	1	4.57
ZT1	500 / 600 mm	7.33	1	7.33
ZT1	500 / 600 mm	7.63	1	7.63
ZT1	500 / 600 mm	8.50	1	8.50
ZT1	500 / 600 mm	11.08	1	11.08
ZT1	500 / 600 mm	13.40	1	13.40
ZT1	500 / 600 mm	17.02	1	17.02
ZT1	500 / 600 mm	17.76	1	17.76
CELKEM				91.39

OZN.	ROZMĚR	DÉLKA [m]	KUSŮ	CELKEM[m]
ZT2	500 / 800 mm	2.25	1	2.25
ZT2	500 / 800 mm	5.56	2	11.12
ZT2	500 / 800 mm	5.64	1	5.64
ZT2	500 / 800 mm	7.26	1	7.26
ZT2	500 / 800 mm	7.68	2	15.36
ZT2	500 / 800 mm	8.91	2	17.82
ZT2	500 / 800 mm	9.94	1	9.94
ZT2	500 / 800 mm	10.50	1	10.50
CELKEM				79.89
ZT2"	500 / 1185 mm	0.96	2	1.92
ZT2"	500 / 1185 mm	1.00	1	1.00
ZT2"	500 / 1185 mm	1.34	2	2.68
CELKEM				5.60
ZT3	370 / 600 mm	0.50	1	0.50
CELKEM				0.50
ZT3	500 / 600 mm	1.63	1	1.63
ZT3	500 / 600 mm	5.31	1	5.31
ZT3	500 / 600 mm	10.91	1	10.91
CELKEM				17.85
ZT4	500 / 1000 mm	24.30	1	24.30
CELKEM				24.30
ZT5	500 / 300 mm	3.94	1	3.94
ZT5	500 / 300 mm	16.48	1	16.48
CELKEM				20.42
ZT5"	500 / 2185 mm	1.63	1	1.63
CELKEM				1.63

OZN.	ROZMĚR	DÉLKA [m]	KUSŮ	CELKEM[m]
ZT6	740 / 600 mm	3.59	1	3.59
CELKEM				3.59
ZT7	740 / 600 mm	0.95	1	0.95
ZT7	740 / 600 mm	2.64	1	2.64
ZT7	740 / 600 mm	3.09	1	3.09
ZT7	740 / 600 mm	7.04	1	7.04
ZT7	740 / 600 mm	8.26	1	8.26
CELKEM				21.98
ZT7"	740 / 1600 mm	1.00	1	1.00
CELKEM				1.00
ZT8	500 / 1600 mm	1.54	1	1.54
ZT8	500 / 1600 mm	6.37	1	6.37
CELKEM				7.91
ZT9	500 / 600 mm	8.99	1	8.99
ZT9	500 / 600 mm	9.49	1	9.49
ZT9	500 / 600 mm	10.10	1	10.10
ZT9	500 / 600 mm	10.58	1	10.58
ZT9	500 / 600 mm	11.58	1	11.58
CELKEM				50.74
ZT9"	500 / 750 mm	1.00	3	3.00
CELKEM				3.00
ZT10	500 / 750 mm	9.49	1	9.49
CELKEM				9.49
ZT11	800 / 600 mm	11.08	1	11.08
CELKEM				11.08

ČÍSLO	PROFIL	DĚLKA	KUSŮ	DĚLKA	HMOTNOST
4	R 8	1.68m	250	420.00m	165.73kg
4	R 8	1.68m	475	798.00m	314.88kg
4	R 8	1.68m	50	84.00m	33.15kg
4	R 8	1.68m	100	168.00m	66.29kg
5	R 8	1.00m	330	330.00m	130.21kg
5	R 8	1.00m	561	561.00m	221.36kg
5	R 8	1.00m	627	627.00m	247.40kg
5	R 8	1.00m	66	66.00m	26.04kg
5	R 8	1.00m	28	28.00m	11.05kg
6	R 8	2.08m	8	16.64m	6.57kg
6	R 8	2.08m	391	813.28m	320.91kg
6	R 8	2.08m	115	239.20m	94.38kg
7	R 8	0.66m	391	258.06m	101.83kg
7	R 8	0.66m	40	26.40m	10.42kg
7	R 8	0.66m	115	75.90m	29.95kg
8	R 8	2.85m	20	57.00m	22.49kg
13	R 8	1.00m	27	27.00m	10.65kg
13	R 8	1.00m	4	4.00m	1.58kg
13	R 8	1.00m	8	8.00m	3.16kg
13	R 8	1.00m	66	66.00m	26.04kg
13	R 8	1.00m	81	81.00m	31.96kg
13	R 8	1.00m	132	132.00m	52.09kg
13	R 8	1.00m	135	135.00m	53.27kg
13	R 8	1.00m	165	165.00m	65.11kg
14	R 8	1.79m	136	243.44m	96.06kg
15	R 8	1.95m	16	31.20m	12.31kg
15	R 8	1.95m	30	58.50m	23.08kg
15	R 8	1.95m	200	390.00m	153.89kg
22	R 8	2.62m	7	18.34m	7.24kg
23	R 8	1.84m	7	12.88m	5.08kg
24	R 8	3.44m	3	10.32m	4.07kg
25	R 8	0.71m	3	2.13m	0.84kg
30	R 8	0.64m	6	3.84m	1.52kg

ČÍSLO	PROFIL	DĚLKA	KUSŮ	DĚLKA	HMOTNOST
31	R 8	1.85m	8	14.80m	5.84kg
32	R 8	1.20m	8	9.60m	3.79kg
33	R 8	1.68m	50	84.00m	33.15kg
36	R 8	1.66m	6	9.96m	3.93kg
37	R 8	2.01m	96	192.96m	76.14kg
R 8 CELKEM				6268.45m	2473.46kg
3	R 12	6.00m	2	12.00m	10.65kg
3	R 12	6.00m	20	120.00m	106.54kg
3	R 12	6.00m	34	204.00m	181.11kg
3	R 12	6.00m	38	228.00m	202.42kg
3	R 12	6.00m	16	96.00m	85.23kg
3	R 12	6.00m	6	36.00m	31.96kg
3	R 12	6.00m	8	48.00m	42.62kg
3	R 12	6.00m	20	120.00m	106.54kg
12	R 12	1.05m	16	16.80m	14.92kg
16	R 12	7.20m	36	259.20m	230.12kg
16	R 12	7.20m	10	72.00m	63.92kg
16	R 12	7.20m	30	216.00m	191.77kg
16	R 12	7.20m	50	360.00m	319.61kg
R 12 CELKEM				1788.00m	1587.41kg
34	R 14	6.00m	30	180.00m	217.51kg
34	R 14	6.00m	6	36.00m	43.50kg
35	R 14	6.00m	30	180.00m	217.51kg
35	R 14	6.00m	6	36.00m	43.50kg
R 14 CELKEM				432.00m	522.02kg
1	R 18	6.00m	3	18.00m	35.96kg
1	R 18	6.00m	68	408.00m	815.01kg
1	R 18	6.00m	57	342.00m	683.17kg
1	R 18	6.00m	6	36.00m	71.91kg
1	R 18	6.00m	9	54.00m	107.87kg
1	R 18	6.00m	24	144.00m	287.65kg
1	R 18	6.00m	15	90.00m	179.78kg
1	R 18	6.00m	20	120.00m	239.71kg

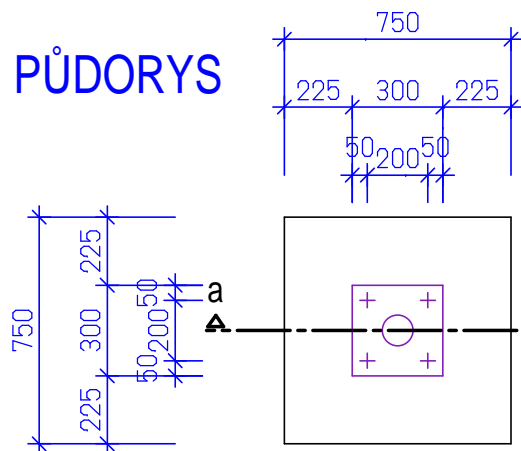
ČÍSLO	PROFIL	DĚLKA	KUSŮ	DĚLKA	HMOTNOST
2	R 18	6.00m	3	18.00m	35.96kg
2	R 18	6.00m	68	408.00m	815.01kg
2	R 18	6.00m	57	342.00m	683.17kg
2	R 18	6.00m	6	36.00m	71.91kg
2	R 18	6.00m	9	54.00m	107.87kg
2	R 18	6.00m	24	144.00m	287.65kg
2	R 18	6.00m	15	90.00m	179.78kg
2	R 18	6.00m	20	120.00m	239.71kg
9	R 18	1.20m	16	19.20m	38.35kg
10	R 18	2.10m	12	25.20m	50.34kg
11	R 18	1.95m	16	31.20m	62.32kg
18	R 18	4.85m	4	19.40m	38.75kg
19	R 18	4.50m	2	9.00m	17.98kg
20	R 18	3.80m	2	7.60m	15.18kg
21	R 18	2.55m	4	10.20m	20.38kg
26	R 18	4.30m	3	12.90m	25.77kg
27	R 18	3.60m	4	14.40m	28.77kg
28	R 18	2.20m	2	4.40m	8.79kg
29	R 18	2.55m	3	7.65m	15.28kg
R 18 CELKEM				2585.15m	5164.03kg
CELKEM					9746.92 kg
PROŘEZ 3%:					292.41 kg
HMOTNOST VÝZTUŽE CELKEM:					10039.33 kg

BETON C25/30 XC4, XF1 Dmax22 S4  
 PODKL. BETON C16/20 X0  
 OCEL B500B

SOUHRNNÝ VÝPIS VÝZTUŽE ZÁKLADOVÝCH TRÁMŮ

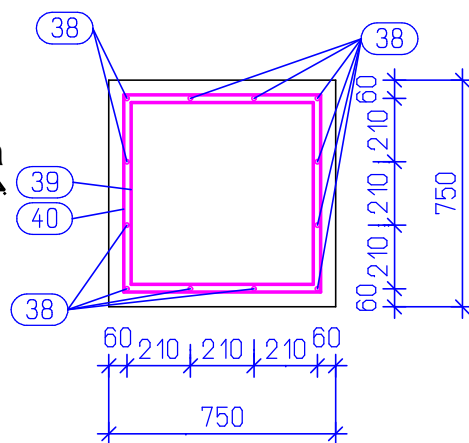
D02.2.02.3 / 19

# PŮDORYS

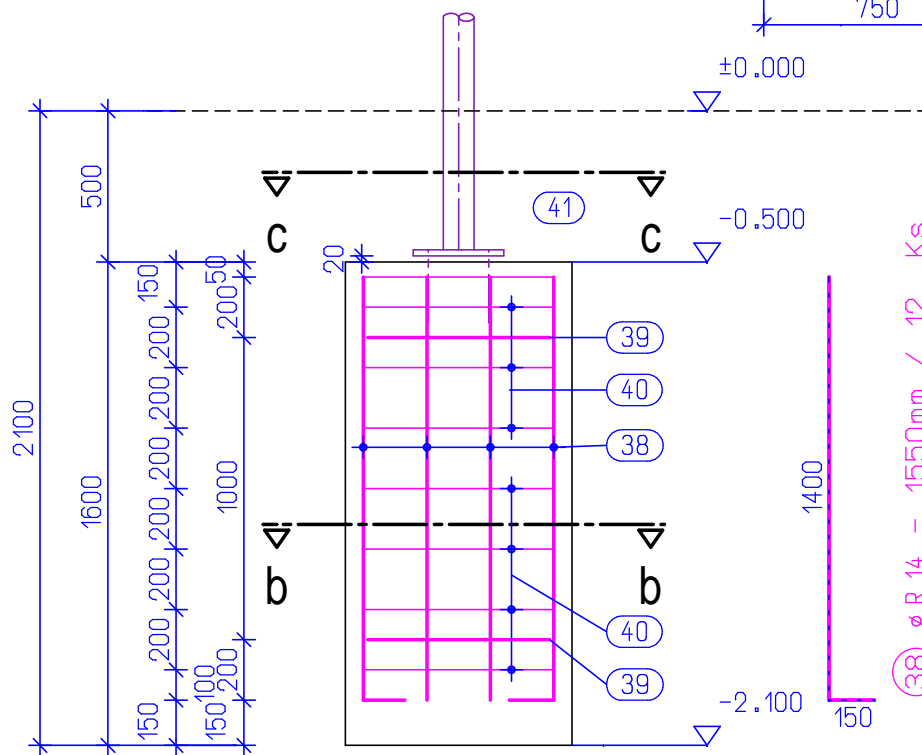
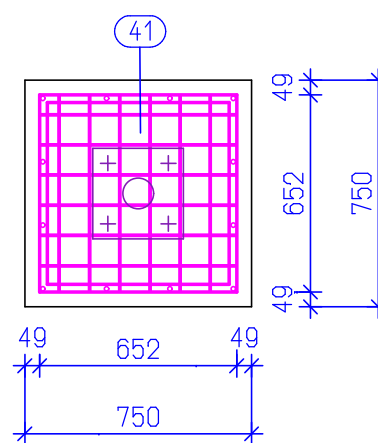


# ŘEZ a-a

# ŘEZ b-b



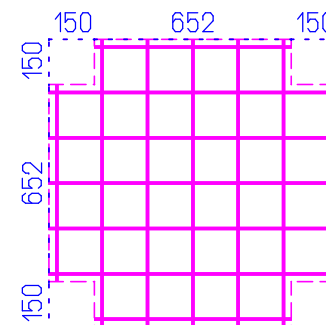
# ŘEZ c-c



38  $\phi$  R 14 - 1550mm / 12 Ks

39  $\phi$  R 14 - 2550mm / 2 Ks

40  $\phi$  R 8 - 2880mm / 7 Ks



SZ 6 / 150 - SZ 6 / 150  
0.9 m x 0.9 m  
/ 3 Ks

## VÝPIS VÝZTUŽE P1

6 Ks

ČÍSLO	PROFIL	DĚLKA	KUSŮ	DĚLKA	HMOTNOST
40	R 8	2.88m	42	120.96m	47.73kg
R 8 CELKEM				120.96m	47.73kg
38	R 14	1.55m	72	111.60m	134.86kg
39	R 14	2.55m	12	30.60m	36.98kg
R 14 CELKEM				142.20m	171.84kg

CELKEM 219.57kg

PRUTOVÁ VÝZTUŽ CELKEM: 219.57 kg  
PROŘEZ 3%: 6.59 kg  
HMOTNOST VÝZTUŽE CELKEM: 226.16 kg

## VÝPIS SÍTÍ P1

6 Ks

ČÍSLO	PROFIL	PLOCHA	KUSŮ	PLOCHA CELK.	HMOTNOST
41	SZ 6/150	0.91	18	16.38 m2	48.47kg
SZ 6 / 150 CELKEM				16.38 m2	48.47kg

CELKEM 48.47kg

SÍTĚ CELKEM: 48.47 kg  
PROŘEZ 5%: 2.42 kg  
HMOTNOST SÍTÍ CELKEM: 50.89 kg

BETON C20/25 XC2 Dmax22 S4  
OCEL B500B